

Clifton South Area Committee Executive Summary

September 2012

INTRODUCTION

Clifton South Ward is on the southern edge of the city. It contains a mixture of house types but is predominantly 50's council housing. A substantial amount of the houses are now privately owned. There are several parks, woods, allotments and a community garden in the Ward and it is well served for local shops and transport.

The population of the area (13,922) is predominantly white working class and a mixture of ages in an aging population of residents who came to the Estate when it was first built. There is little local employment and people working in the area tend to work for statutory organisations or in the local shops. Overall there is high unemployment in the area, a higher than average number of people on benefits, and the ward is in the worst 10% nationally in terms of education, skills and training indicators.

The ward has a number of well-established grass roots organisations representing local people and their views. These run the community groups and two community centres in the ward.

The main challenges for the ward and its inhabitants are anti-social behaviour, employment & training, parking, Health (including mental health)

The advent of NET Stage 2 and the widening of A453 will impact on the south ward as will the possibility of additional housing at the boundary with Rushcliffe

Ward priorities – Progress update

Theme	Priority	Key Actions
SAFER	ASB at shops, parks and playgrounds ASB at Barbury Drive Increased take up N Watch and Alert	High visibility patrols at peak times Revisits to victims of crime to reduce repeat offending Sharing Alerts with local residents
NEIGHBOURHOODS	Litter, Bulky waste, fly-tipping, dog fouling Parking issues Improvements to playgrounds	Fly-tipping hotspots being cleared and notices being served on private land Improved parking on Glapton Lane being explored Barton Green improvements autumn 2012 Tintagel Green consultation to take place with improvements to follow 2013
FAMILIES	More facilities for younger children Support for teenagers	
HEALTH	Encourage healthier lifestyles Awareness raising and support on Mental Health issues	Changemakers, Clifton HWAG and others working on obesity, smoking, healthier lifestyles Carers Federation working with Clifton Mental Health Forum & partners, including NHS
WORKING	Training for local people Jobs for young adults Jobs and training Fairs	

Community Engagement

Events Delivered

Event	Lead Partners	Date/Time	Venue
Phase 2 Park Opening Event	Parks/Groundwork/Neigh Services	Weds 24 th October 1pm – 3pm	Angell Green Park (Nobel Rd)

Future Events and Activities Planned

Event	Lead Partners	Date/Time	Venue
Older Peoples Event	Health	Mon 26 th November 10am -2pm	Clifton Leisure Centre
Budget Consultation	Neighbourhood Management	December 3 rd 6.30 – 8.00pm	Clifton Cornerstone
Christmas Light Switch-On	Neighbourhood Management	December 7 (subject to Tram works)	Clifton Shops, Library. Green Lane Youth Centre

Community Engagement

Ward Walks

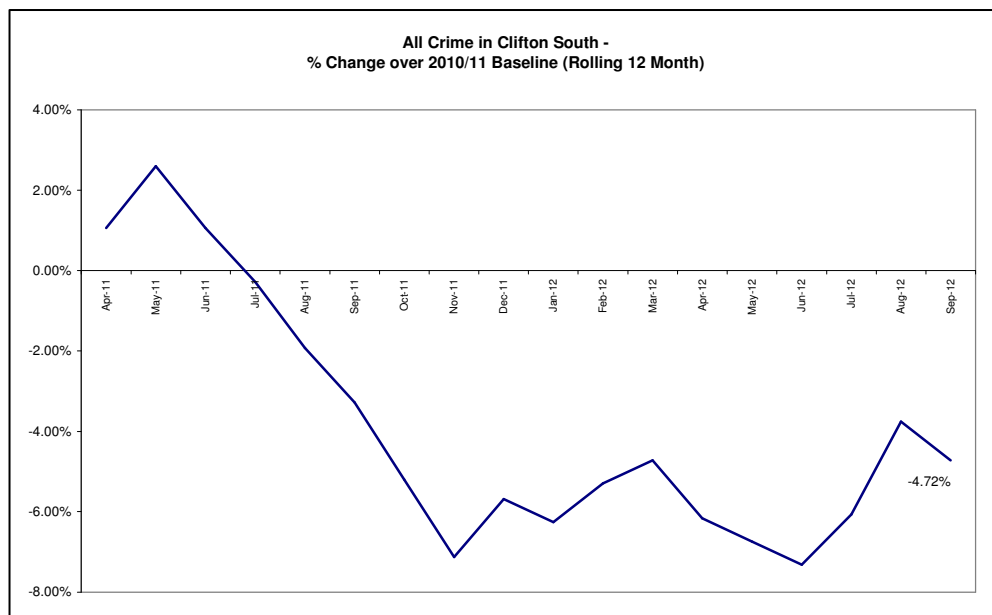
Area/Estate	Date/Time	Meeting Point
Green Lane 3	September 27 th – 10.30	Brandish Crescent
Green Lane (Clifton Village)	October 18 th – 10.30	Church, Clifton Village
Fairham 3	November 27 th – 10.30	Scafell Way Park
Green Lane 2	24 th January 2013 – 10.30	Park Gate

Community Meetings

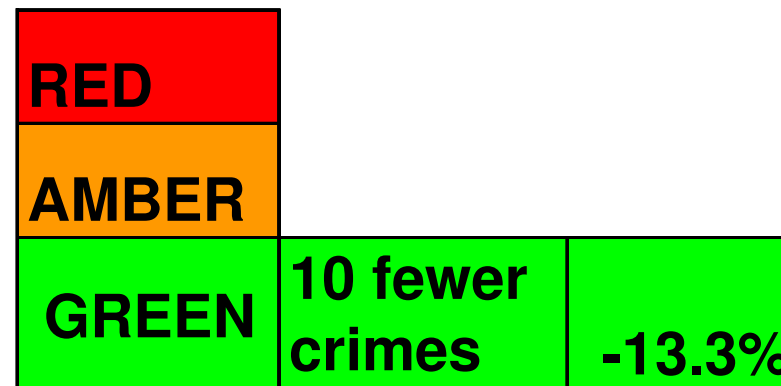
Group	Date	Venue
Highbank CA	September 10 th	Highbank CC
Barton Lane Community Ass	September 25 th	Park Gate CC
Nobel Road TRA (AGM)	October 2 nd	Park Gate CC
Highbank CA	October 15 th	Highbank CC
Nobel Road TRA	November 6 th	Park Gate CC

Finance

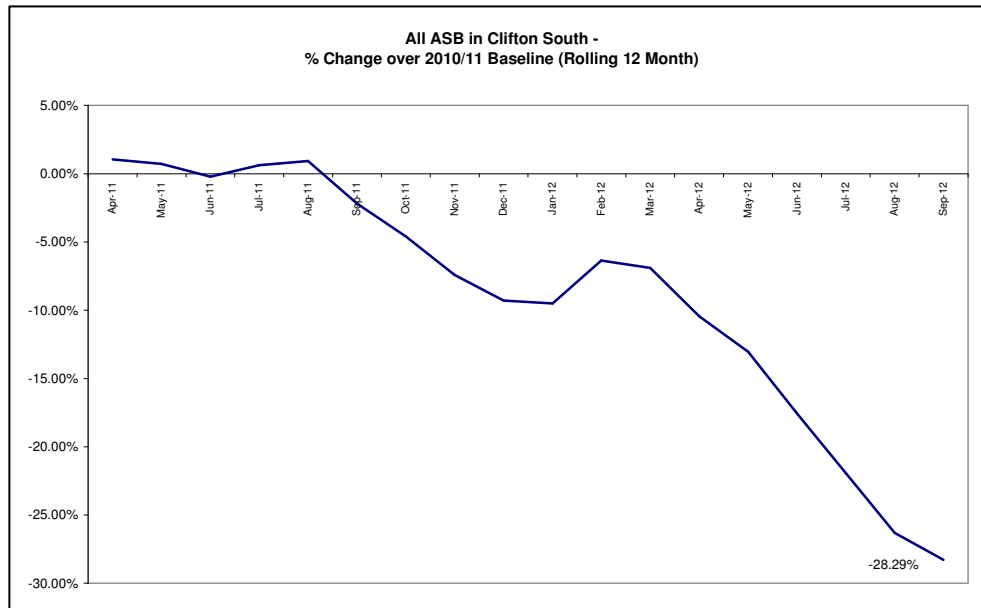
- **Ward Councillor Budgets** (as at 19/9/12)
Total amount allocated this period £36,846
Budget remaining unallocated (inc. of 2012-2013 allocation): £11,809
- **Area Capital Fund**
Total amount allocated this period £ 112,251
Budget remaining unallocated £20,292 (inc. of 2012-2013 allocation)
- **Others – Section 106, NCH Environmentals, Other Funding**



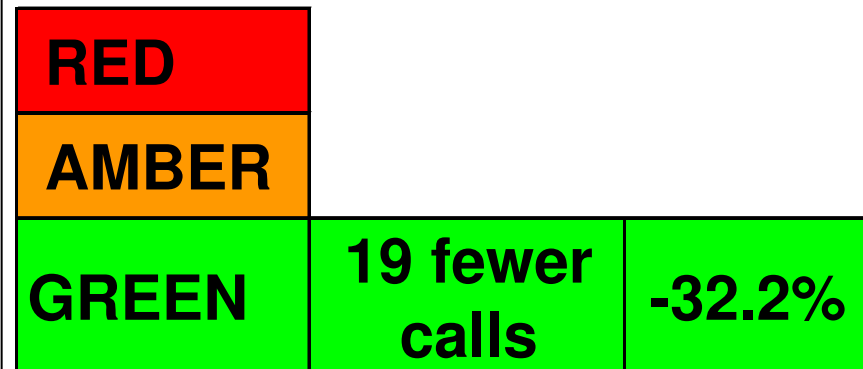
Crime



- **All Crime** in Clifton South is showing a **decrease of 13% (10 crimes) compared to September 2011**.
- The Baseline graph shows that All Crime is showing a **small decrease (5%)** against the more long-term 2010/11 Baseline.
- For the Year to Date picture, Clifton South is showing exactly the same amount of crime as the corresponding period last year.
- In terms of Clifton South's crime rate (per 1000 of population), for All Crime it sits 'mid table' at 11th out of the 20 Wards, and under the Division average.



ASB



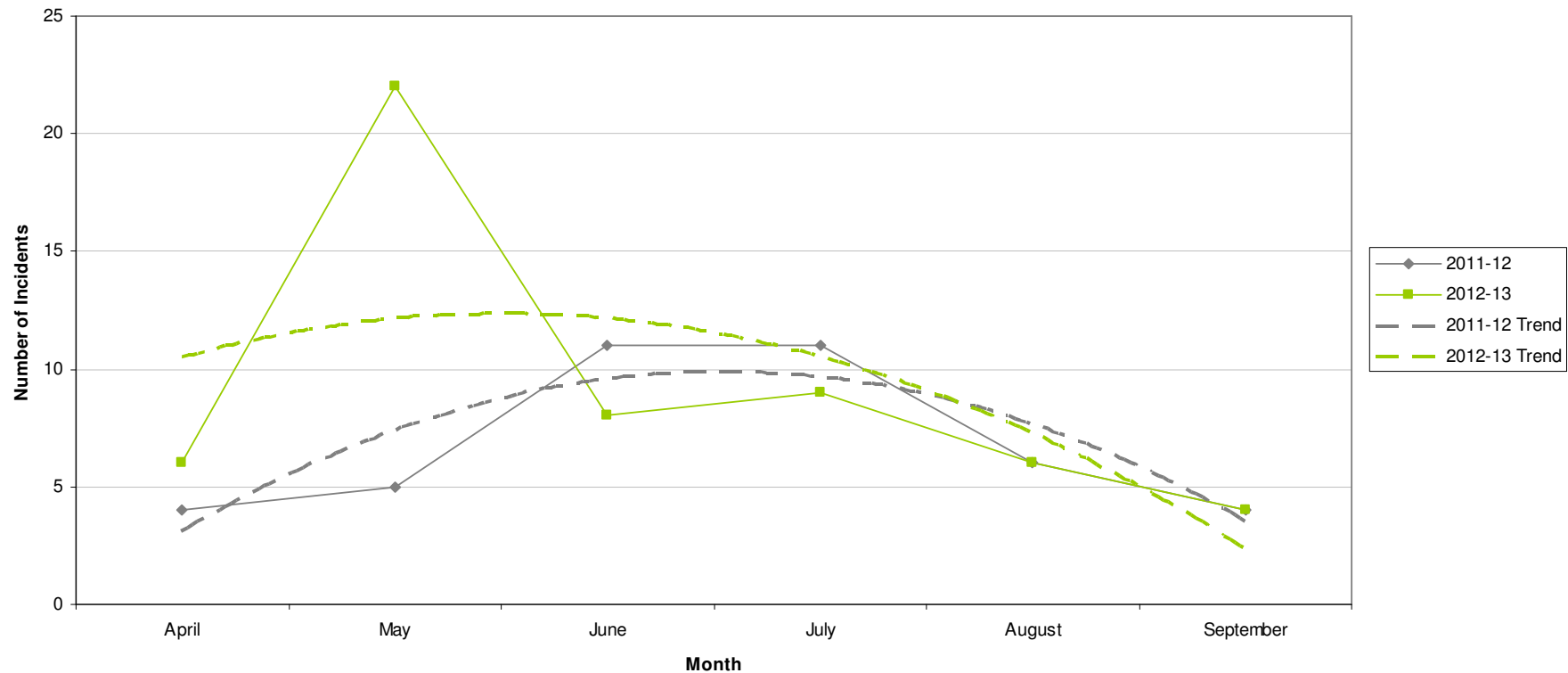
- For the Month of September 2012 (compared to September 2011), **Clifton South is showing a 32% reduction.**
- Year to date Clifton South is currently showing a reduction of **40.2%.**
- In regards to the long-term performance (rolling 12 month total), Clifton South is showing a decrease over a 2010/11 baseline (28.3%).
- In September, the overwhelming majority of Clifton South's ASB types were **ASB Nuisance (85%)**. To give context, this is slightly higher than the Division as whole, with the proportion of City Wide ASB Nuisance calls being 77%.

Graffiti Reports

RED	
AMBER	No change
GREEN	

- All data refers to a comparison with the previous year's month
- It is proposed that performance over time graphs be used for each indicator
- Historic data for comparison is not available for dog fouling

Incidents of Graffiti

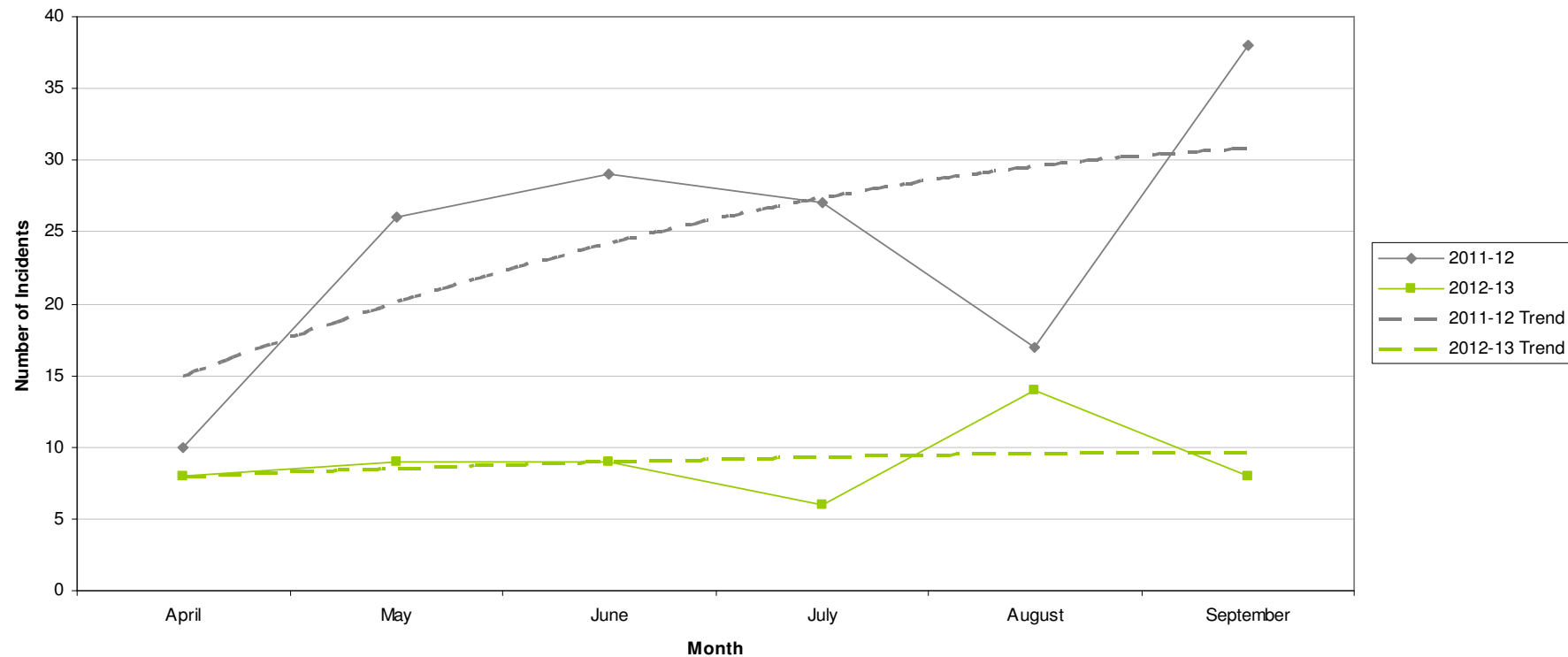


Fly Tipping

RED		
AMBER		
GREEN	30 fewer reports	-79%

- All data refers to a comparison with the previous year's month
- It is proposed that performance over time graphs be used for each indicator
- Historic data for comparison is not available for dog fouling

Incidents of Fly Tipping

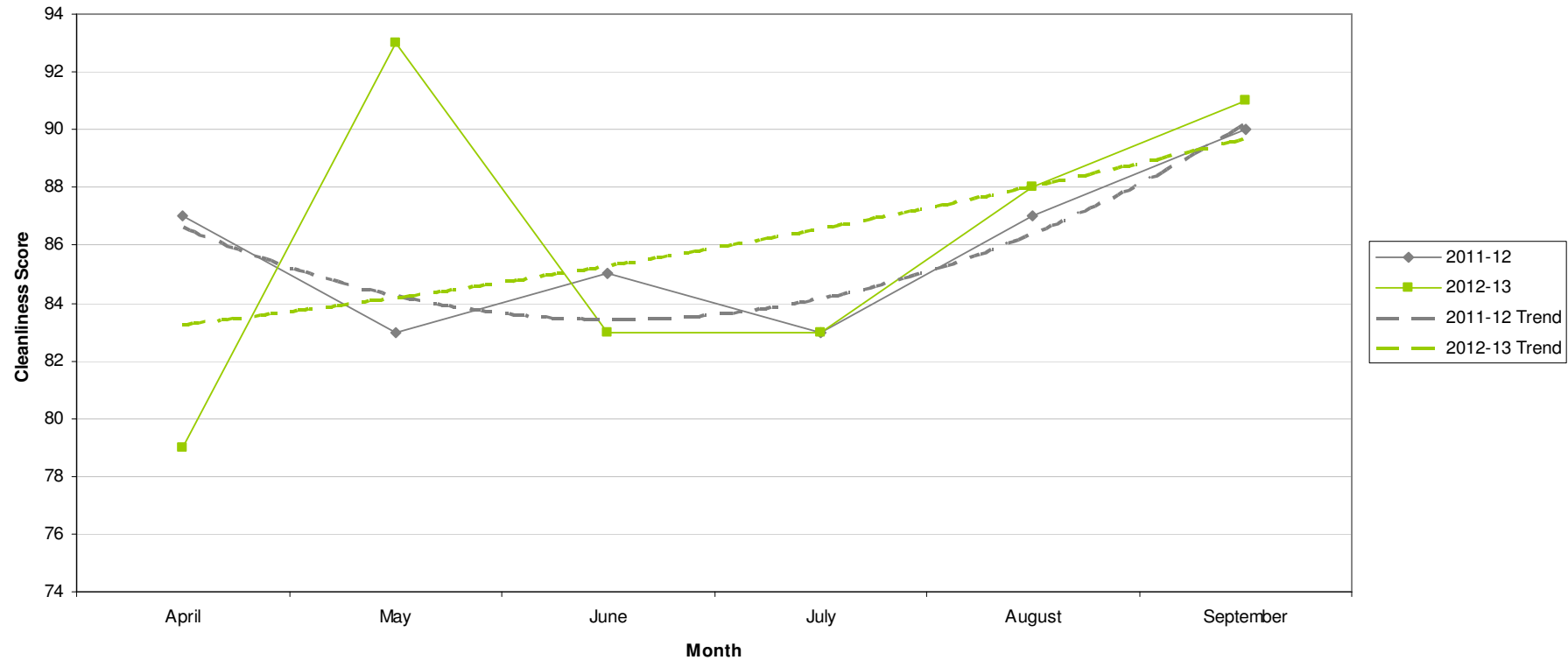


Cleanliness Index

RED		
AMBER		
GREEN	91	1 point increase

- All data refers to a comparison with the previous year's month
- It is proposed that performance over time graphs be used for each indicator
- Historic data for comparison is not available for dog fouling

Cleanliness Index



Unemployment Rate

Area	Aug-12			Change in last month		Change in last year	
	Number	Rate	City Rank	Number	%	Number	%
Arboretum	830	7	9	12	1.5	86	11.6
Aspley	1,197	10.6	1	15	1.3	57	5
Basford	730	6.6	11	21	3	25	3.5
Berridge	1,090	7.5	6	17	1.6	115	11.8
Bestwood	989	8.7	4	-26	-2.6	-19	-1.9
Bilborough	762	7.3	7	-36	-4.5	6	0.8
Bridge	756	7.2	8	6	0.8	15	2
Bulwell	1,045	9.6	2	-4	-0.4	32	3.2
Bulwell Forest	444	4.9	15	-12	-2.6	-5	-1.1
Clifton North	381	4.3	16	-14	-3.5	27	7.6
Clifton South	506	5.8	12	12	2.4	-11	-2.1
Dales	883	7.6	5	-10	-1.1	8	0.9
Dunkirk and Lenton	262	2.4	19	-5	-1.9	-27	-9.3
Leen Valley	351	5	14	13	3.8	26	8
Mapperley	750	6.7	10	31	4.3	8	1.1
Radford and Park	776	4.1	17	-19	-2.4	36	4.9
Sherwood	552	5.1	13	-19	-3.3	-71	-11.4
St Ann's	1,242	9	3	13	1.1	29	2.4
Wollaton East and Lenton Abbey	144	1.5	20	9	6.7	4	2.9
Wollaton West	262	2.8	18	29	12.4	25	10.5

Source: ONS claimant count August 2012 (from Nomis)

The table above shows the position of Your Ward regarding its unemployment rate including the numbers unemployed for the last Month and its progress over time. Data refers to August

This is an edited version of a report produced by: Geoff Oxendale, Information and Research Officer, Nottingham City Council

Housing



Clifton South Ward

Empty properties - Clifton South Ward

Indicator	Current Target	2010/11	2011/12	2012/13		
		Value	Value	Value	Status	Trend
Average void re-let time for Clifton South Ward	26	45.53	21.21	34.07		
Lettable voids Clifton South Ward		15	15	14		
Empty properties awaiting decommission in Clifton South Ward		0	0	0		

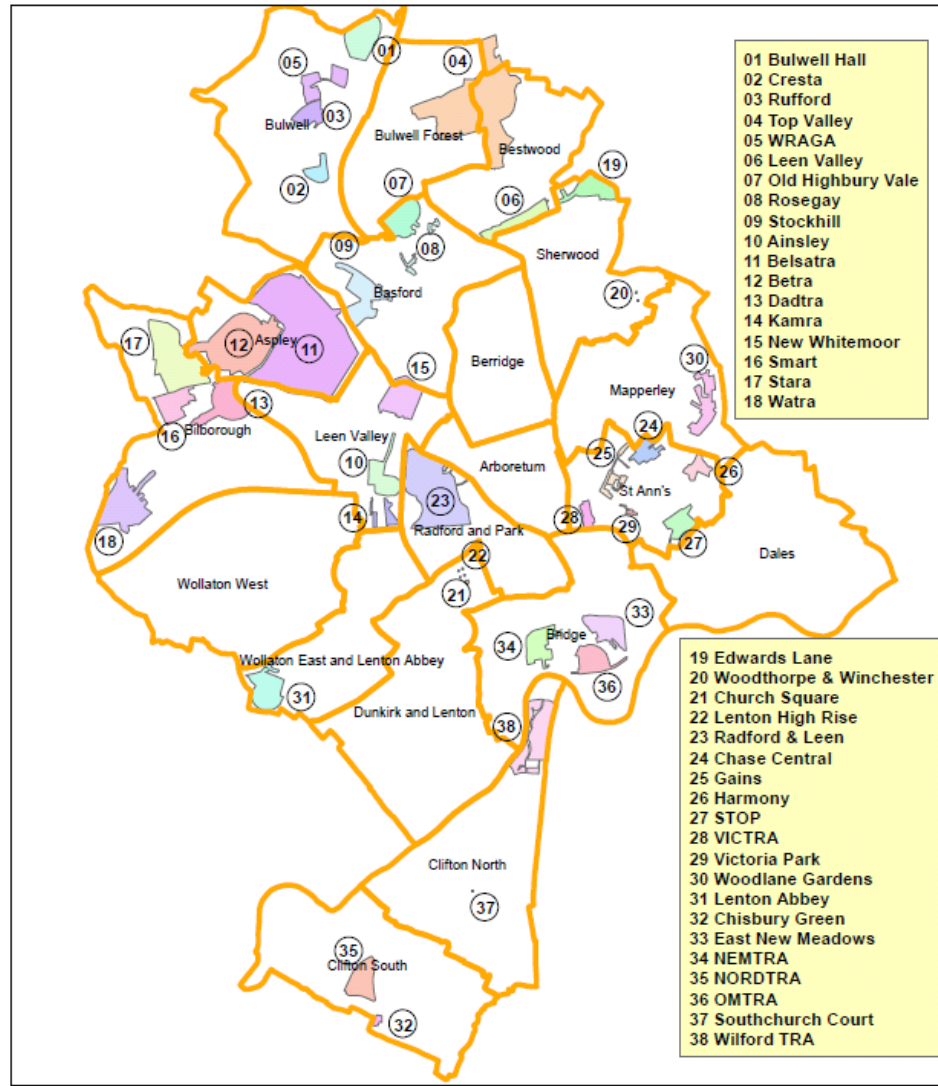
Estate star ratings (from Tenant Service Inspectors)

Indicator	2010/11		2011/12		2012/13		
	Value	Status	Value	Status	Value	Status	Trend
Estate star rating - Nobel Road	3 Star		3 Star		3 Star		

Rent Collection - Clifton

Indicator	Current Target	2010/11	2011/12	2012/13		
		Value	Value	Value	Status	Trend
Rent charged that has been collected - Clifton office area	100%	100.9%	101.4%	99.8%		

Housing



Map of Tennant and Resident Associations by Ward

Community Protection

In Your Ward in September there were the following court outcomes

- Suspended Possession Order – Drugs
- Injunction – Drugs
- Statutory Notice - Environment

Regarding the above, this relates to the home address of the Perpetrator.

FPNs are not currently available at Ward level.

Methodology

Crime Data and ASB calls have been extracted from the Police systems and mapped to ascertain which Ward they occurred in.

Due to the dates of the meetings, data for all Wards was extracted at the same time at the start of the month - and as such is not officially 'validated' data.

Where possible the most recent data is used, although for some areas this may be a month further in arrears.

Discussions continue with other agencies regarding what further data can be included.